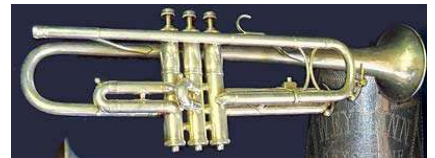
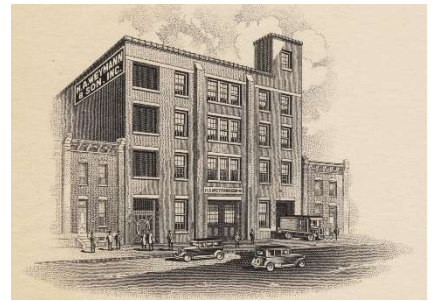


Henry A. Weymann & Son

Philadelphia

- 1852 Henry Arnold Weymann emigrates to Philadelphia.
- 1864 Henry A. Weymann (1829-1892) took over the business of C.F. Zimmerman & Son at #156 N. 2nd St., Philadelphia.
- 1866 Henry A. Weymann, cutlery, #156 N. 2nd.
- 1867 Retail hardware; same address (directory).
- 1870 Henry A. Weymann, cutlery (census).
- 1880 Musical instrument dealer, #156 N. 2nd (census).
- 1885 H. A. Weymann & Son, #156 N. 2nd, with son Henry (Harry) W. Weymann (1866-1939) (NLI).
- 1892 Henry A. dies on March 21, jeweler. Start of the "Keystone State" line of stringed instruments. Showroom at #1314 Chestnut St; wholesale at #43-45 N. 9th; factory at #156 N. 2nd; makers of banjos, guitars, & mandolins (dir).
- 1899 Recently moved wholesale & retail to #1022 Market St.
- 1900 H.A. Weymann & Son, #156 N 2nd & #1022 Market St (dir). Albert C., Harry W., Rebecca (Harry's wife) & William A. Weymann (1874-1918) owners.
- 1903 Moving to #935 Market St. on May 1st (advert.).
- 1905 #923 Market St., importer & manuf. of musical inst. (dir).
- 1910 Son Henry (Harry) Power Weymann (1889-?) is a clerk. Factory at #100 Sansom St; store at #1010 Chestnut St.
- 1920 Henry W. Weymann, musical instrument importer; son Herbert W. Weymann (1891-1969) is salesman (census).
- 1921 H.A. Weymann & Son, Inc., #1108 Chestnut St (dir).
- 1922 Dealers for Buescher band instruments (advert.).
- 1928 Registers "Varsity" name used since 1923 (trademark).
- 1930 Factory at #817-823 W. Cumberland St (photo 3).
- 1939 Harry W. Weymann, president, dies September 4th.
- 1942 Weymann Co., #1613 Chestnut St; Herbert is treasurer, brother Albert C. Weymann (1874-?) is president.
- 1969 The Weymann Music Co. has recently closed following the death of Herbert W. Weymann (78). They were operating as a wholesale music dealer in recent years. Established in 1864 (*Billboard*, Sept. 6).

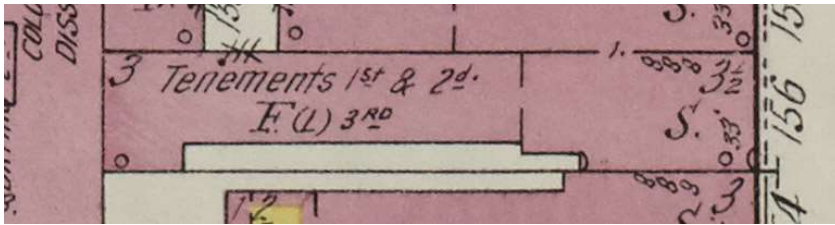
Photos are from Horn-u-copia.net. Weymann photo from 1927.



Store & Factory Locations:

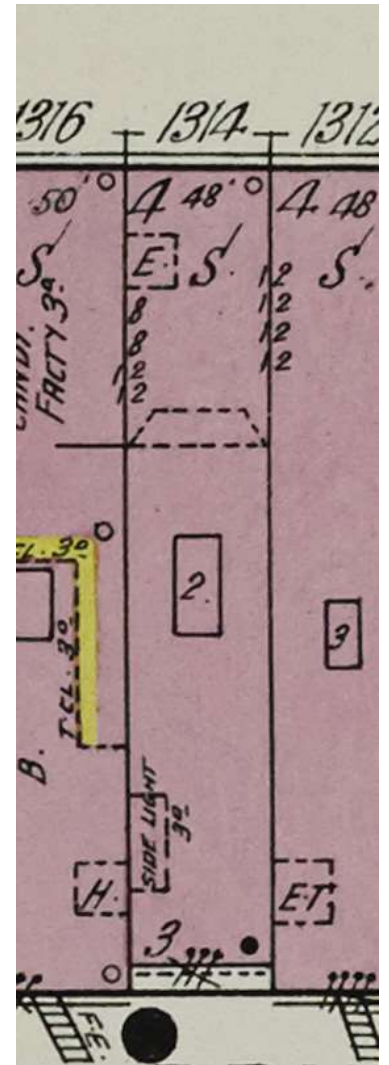
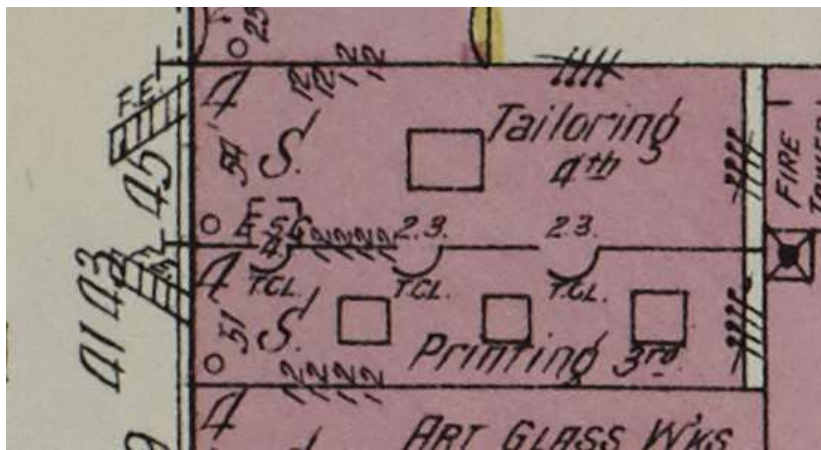
#156 N. 2nd St: 1864-c.1910; factory only from 1892

This is now an alley. 1929 Sanborn map below.



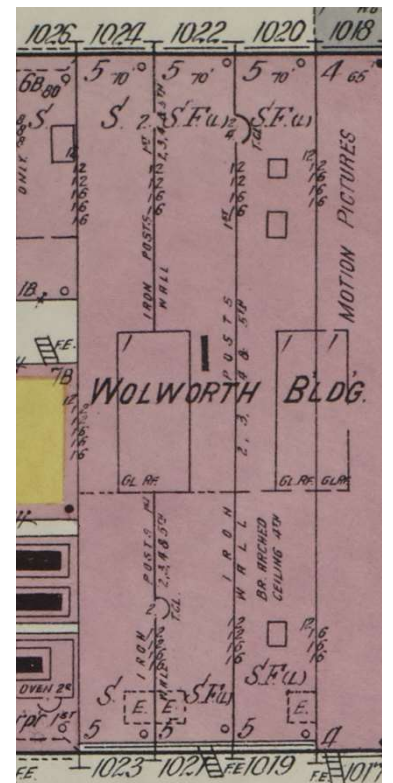
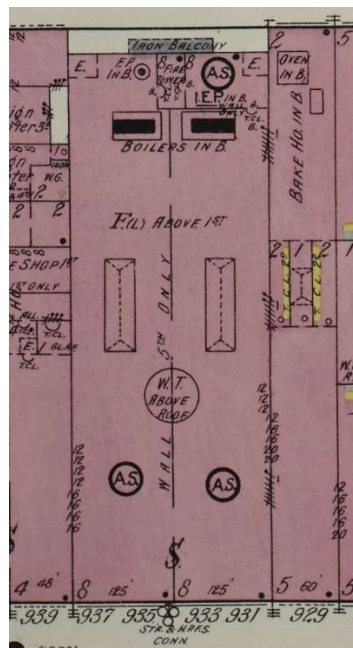
#1314 Chestnut St: Retail showroom from 1892-1899. Now replaced by a modern building. 1929 map at right.

#43-45 N. 9th St: Wholesale location from 1892-1899. Now a parking lot. 1929 map below.



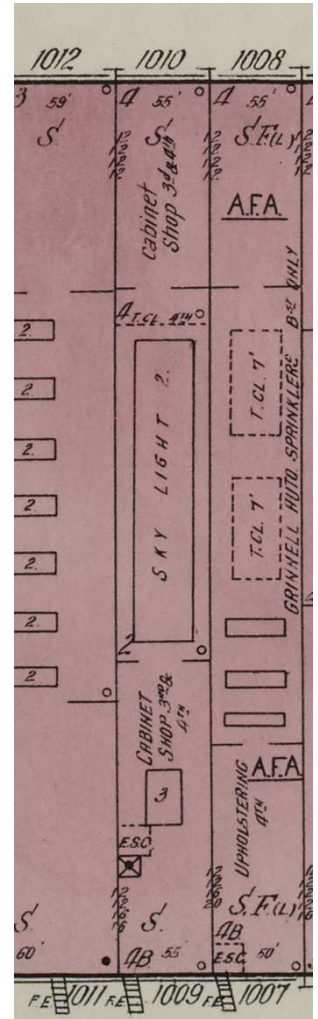
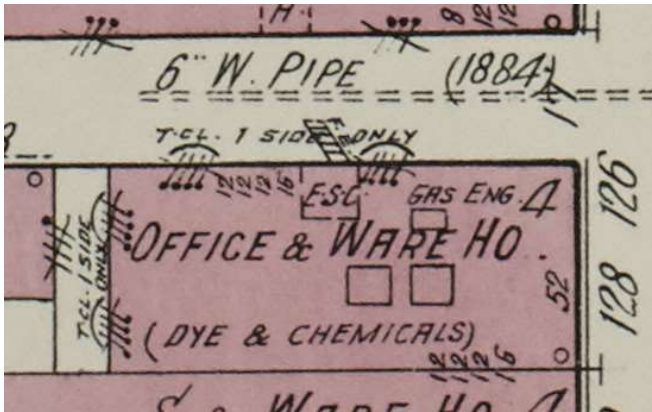
#1022 Market St: Wholesale & Retail from 1899-1903. This is possibly the Wolworth building shown at right in 1929. Still existing today but highly altered.

#935 Market St: 1903-1910; now gone; 1929 map below

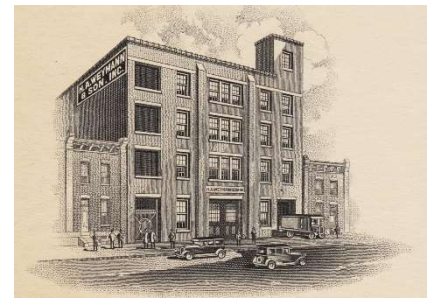
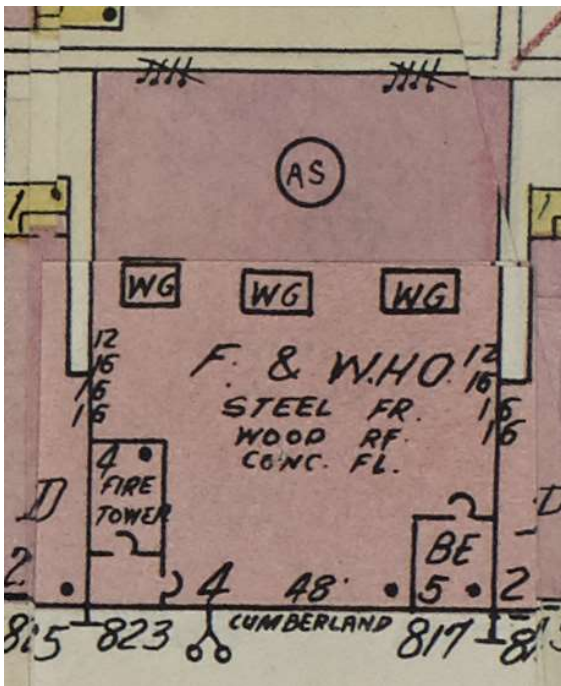


#1010 Chestnut St: Store location from 1910-c.1930; now a modern hospital. Photo 1 at right is from 1929.

#100 Sansom St: Factory location c.1910-1930. This building is now gone. 1929 view below.



#817-823 W. Cumberland St: Factory location, c.1930-1969. This is now an empty lot. 1950 Sanborn map below. Images at right from c.1940 and 2023.



#1613 Chestnut St: Store location in 1942. This building is now gone.

